



REGIONAL SPECIALISED METEOROLOGICAL CENTRE-TROPICAL CYCLONES, NEW DELHI

DEMS-RSMC SPECIAL TROPICAL CYCLONES NEW DELHI DATED 12.05.2022

SPECIAL TROPICAL WEATHER OUTLOOK FOR NORTH INDIAN OCEAN (THE BAY OF BENGAL AND ARABIAN SEA) VALID FOR NEXT 120 HOURS ISSUED AT 0630 UTC OF 12.05.2022 BASED ON 0300 UTC OF 12.05.2022.

SUB: DEPRESSION (REMNANT OF CYCLONIC STORM 'ASANI') WEAKENED INTO A WELL MARKED LOW PRESSURE AREA OVER COASTAL ANDHRA PRADESH

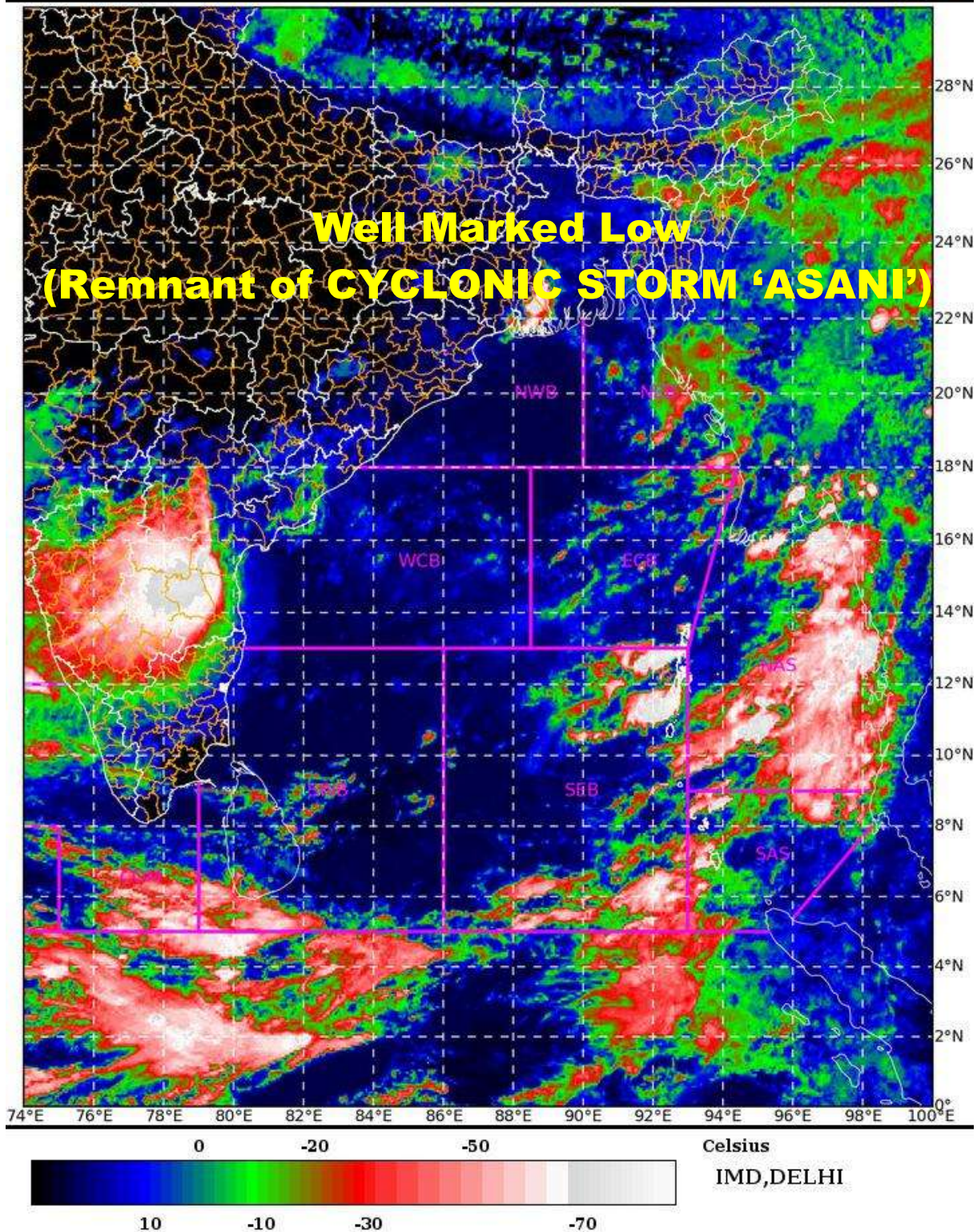
THE **DEPRESSION** (REMNANT OF CYCLONIC STORM 'ASANI') OVER COASTAL ANDHRA PRADESH WEAKENED INTO A **WELL MARKED LOW PRESSURE AREA** OVER THE SAME REGION AT 0300 HOURS IST OF TODAY, THE 12TH MAY, 2022. IT IS LIKELY TO WEAKEN FURTHER INTO A LOW PRESSURE AREA BY 1200UTC OF 12TH MAY.

INSAT-3D IMAGERY BASED ON 0300UTC OF 12TH MAY 2022 INDICATES BROKEN LOW AND MEDIUM CLOUDS WITH EMBEDDED INTENSE TO VERY INTENSE CONVECTION OVER RAYALSEEMA, COASTAL ANDHRA PRADESH & EAST OF KARNATAKA. MINIMUM CLOUD TOP TEMPERATURE IS MINUS 93 DEG C AND SCATTERED MODERATE TO INTENSE CONVECTION OVER NORTH COASTAL ANDHRA PRADESH AND WESTCENTRAL BAY OF BENGAL OFF ANDHRA PRADESH COAST.

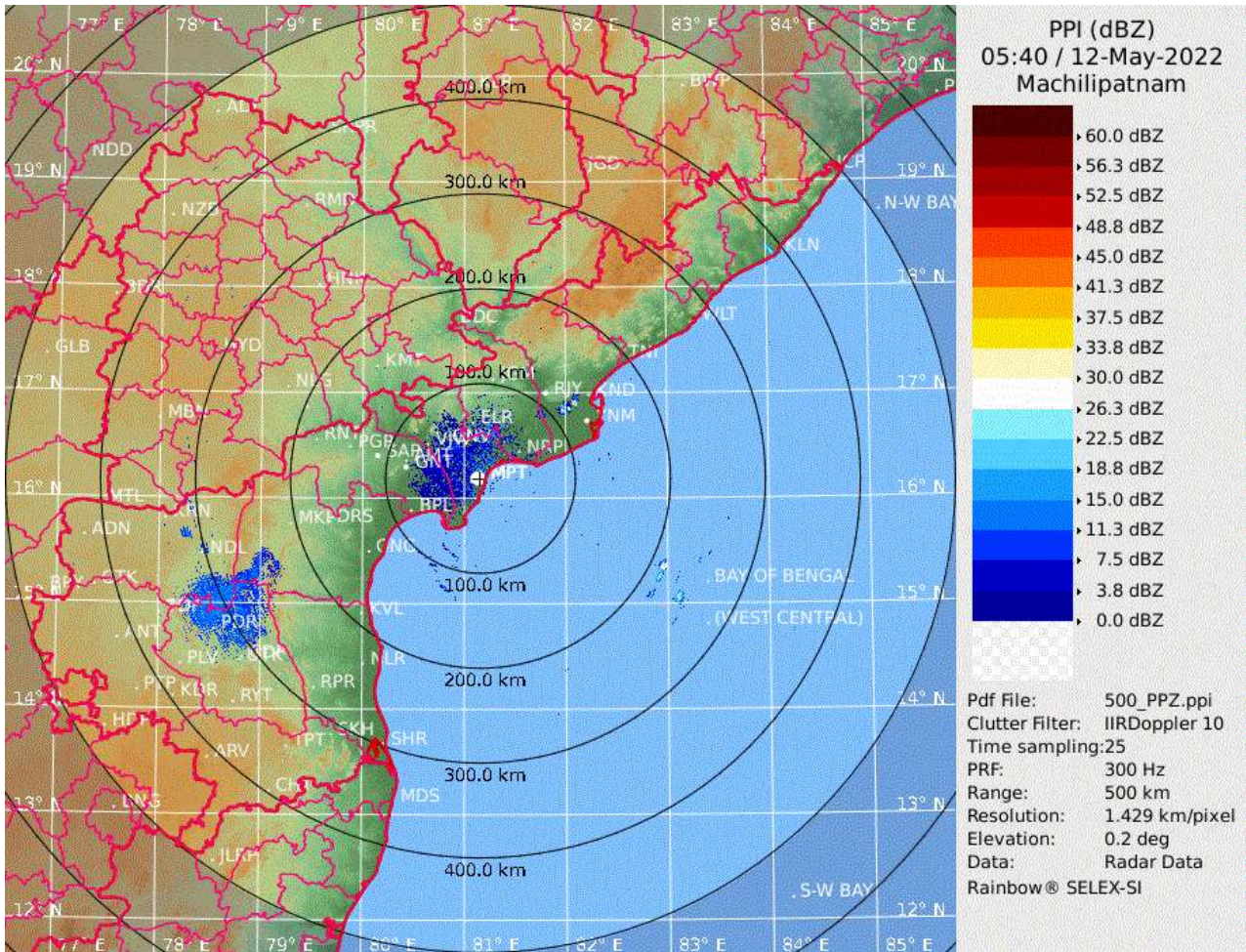
(RK JENAMANI)
SCIENTIST-F, RSMC, NEW DELHI

THIS IS THE LAST **SPECIAL TROPICAL WEATHER OUTLOOK** ISSUED FOR THIS SYSTEM. **HOWEVER, FOR REGULAR BULLETINS PLS REFER [HTTPS://RSMCNEWDELHI.IMD.GOV.IN/](https://RSMCNEWDELHI.IMD.GOV.IN/)**

SAT : INSAT-3D IMG 12-05-2022/(0500 to 0526) GMT
IMG_TIR1_TEMP 10.8 um 12-05-2022/(1030 to 1056) IST
L1C Mercator



DEPRESSION (REMNANT OF CYCLONIC STORM "ASANI") VIEWED BY THE DWR AT MACHILIPATNAM





OBSERVED TRACK OF CYCLONIC STORM 'ASANI' OVER BAY OF BENGAL DURING 07th TO 12th MAY 2022



DATE/TIME IN UTC
IST=UTC + 0530
L: LOW PRESSURE AREA
WML: WELL MARKED LOW PRESSURE AREA
D: DEPRESSION (17-27 KT)
DD: DEEP DEPRESSION (28-33 KT)
CS: CYCLONIC STORM (34-47 KT)
SCS: SEVERE CYCLONIC STORM (48-63KT)
VSCS: VERY SEVERE CYCLONIC STORM (64-89 KT)
ESCS: EXTREMELY SEVERE CYCLONIC STORM (90-119 KT)
SuCS: SUPER CYCLONIC STORM (\geq 120 KT)

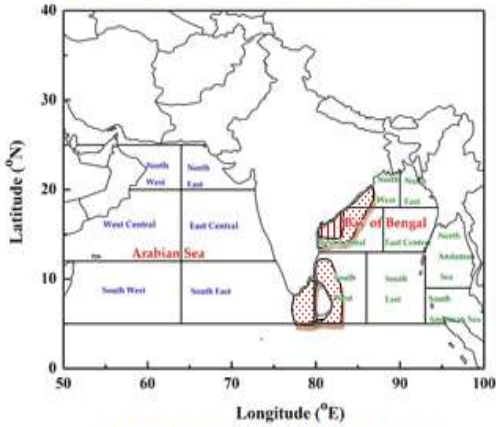
- LESS THAN 34 KT
- 34-47 KT
- \geq 48 KT
- OBSERVED TRACK
- FORECAST TRACK
- CONE OF UNCERTAINTY

FISHERMEN WARNING GRAPHICS

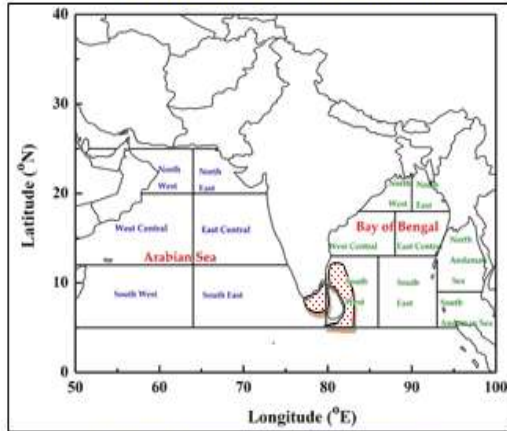
INDIA METEOROLOGICAL DEPARTMENT

FISHERMAN WARNING FOR BAY OF BENGAL AND ARABIAN SEA

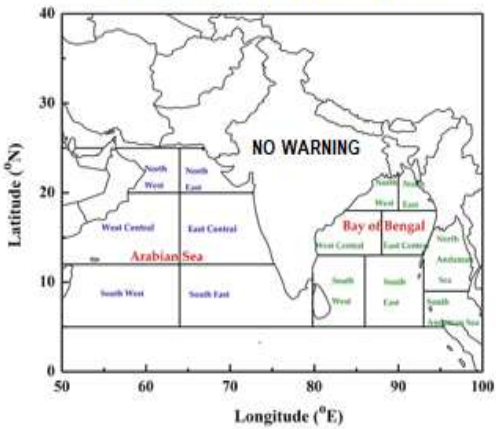
DAY-1: 12.05.2022/1800 UTC TO 13.05.2022/1800 UTC



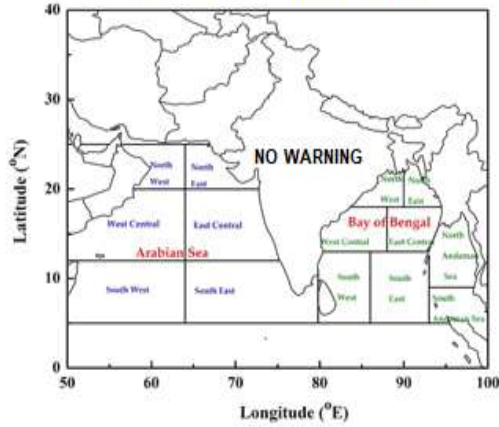
DAY-2: 13.05.2022/1800 UTC TO 14.05.2022/1800 UTC



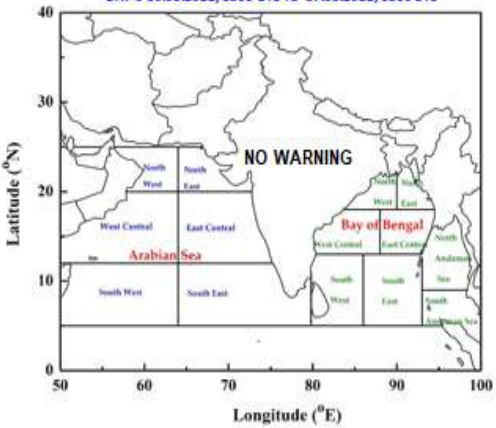
DAY-3: 14.05.2022/1800 UTC TO 15.05.2022/1800 UTC



DAY-4: 15.05.2022/1800 UTC TO 16.05.2022/1800 UTC



DAY-5: 16.05.2022/1800 UTC TO 17.05.2022/1800 UTC



AREA UNDER FISHERMEN WARNING

- 40-50 KMPH GUSTING TO 60 KMPH (SQUALLY WEATHER)
- 45-55 KMPH GUSTING TO 65 KMPH
- 55-65 KMPH GUSTING TO 75 KMPH
- 65-75 KMPH GUSTING TO 85 KMPH
- 70-80 KMPH GUSTING TO 90 KMPH
- 75-85 KMPH GUSTING TO 95 KMPH
- 90-100 KMPH GUSTING TO 110 KMPH